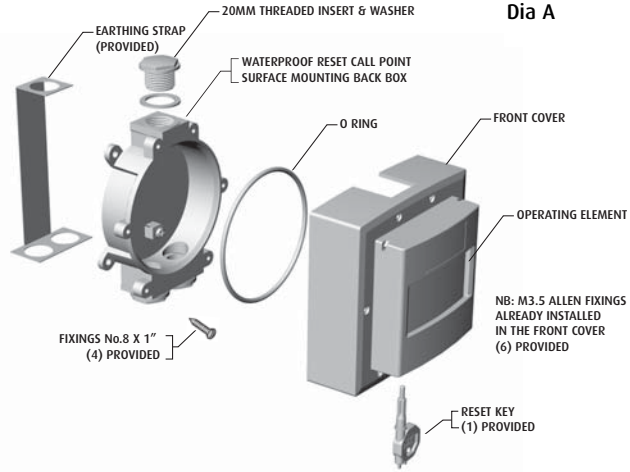


Waterproof ReSet Manual Call Point EV-MCP + NS -ACP WP Analogue Addressable

The IP 67 Waterproof ReSet (WRP) has been designed to deal with today's difficult and harsh environments. Like the ReSet Call Point it is a unique fire alarm manual Call Point that mimics the feel of breaking glass whilst offering the user the benefits and safety advantages of a glass-free resettable operating element. Once activated a warning flag drops in to view easily identifying the Call Point that has been operated. A key can then reset the unit. The Waterproof ReSet provides an ideal solution for most conventional fire alarm systems. Ideal for all outside applications such as oil rigs, ships, factory's as well as wash down areas that are sensitive to broken glass.

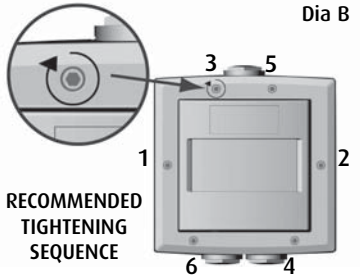


Dia A

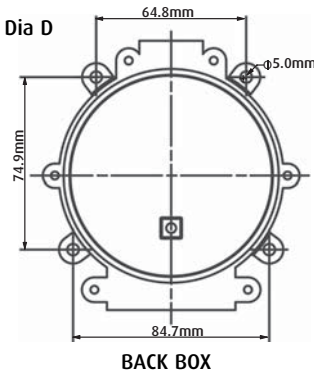
Mounting Method

1. Remove the Waterproof ReSet Call Point (WRP) from its packaging. Detach the front cover from the back box. The earthing strap will be attached to the back box. You have a choice to keep or remove the earthing strap.
2. Ensure the conduit or cabling lines up with the conduit entries located on the top or bottom of the back box and remove the desired conduit threaded insert(s). It is recommended that entry to the WRP is via the one or two 20mm threaded entries on the bottom of the back box.
3. Take the back box (ensuring the two entries are located at the bottom) and mark the position for the four fixing screws.
4. Drill the holes and install the back box using the four fixing screws and rawl plugs provided.
5. When the wiring connections are complete, fix the front cover to the back box. There are x6 allen screws evenly distributed around the front cover. Using the allen key provided tighten each allen screw by one full turn, then move onto the next. This will ensure that even pressure is applied all the way around. See Dia B for recommendation on the sequence to be used. The recommended torque for the allen screws is 5 N·m. In order to achieve IP67 rating, ensure the front cover is securely tightened to the back box.

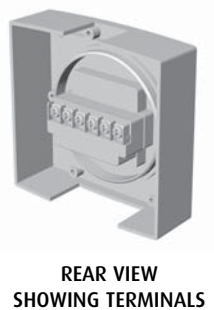
IMPORTANT NOTICE



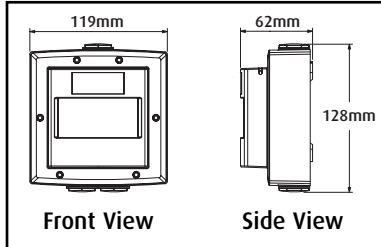
Dia B



Dia C



Dimensions



Technical Data for Waterproof ReSet Manual Call Point EV-MCP + NS-ACP WP Analogue Addressable

EVOLUTION EV-MCP RESET WP Analogue Addressable Waterproof Manual Call Point

Part Numbers and Product Order Codes:-
Part Number: EV-MCP RESET WP
Description: Analogue Evolution Manual Call Point
Computer Reference No: F16N82004

Technical Specifications:-
Operation Method: Non Frangible, Resettable
Operating Element: Microswitch
Operating Voltage: 20V d.c. to 35V d.c.
System Voltage: 35V d.c.
Quiescent Current: 200µA
Alarm Current: 2mA (LED ON)

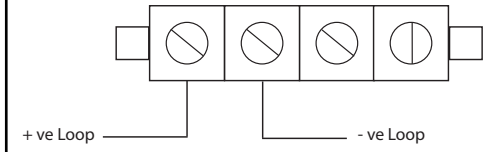
Operating Temperature: - 25°C to + 70°C
Storage Temperature: - 25°C to + 70°C
Charging Time: 1 minute
Relative Humidity: ≤ RH95% non-condensing
I.P. Protection Rating: IP67
Addressing Method: 8 Way DIL switch
Material: POM / Polycarbonate
Dimensions: 119mm x 119mm x 62mm
Mass: 324gms
Connections: Terminal Block

EMC Conformance: EMC conformance to BSEN50130-4
CE Conformity: EN54-11

Call Point Connection + Address Setting

WARNING: Connect only to NITTAN (UK) Ltd suitable and compatible analogue-addressable control panels. If in doubt, check with panel manufacturer. The call point address **MUST** be set prior to installation with power off. This sheet gives summary information only.

CONNECTIONS



ADDRESS SETTING

Check whether your fire alarm panel codes the loop devices in DECIMAL or HEXA-DECIMAL (hex). After setting address, see overleaf, correct communication with the call point should be confirmed from the panel (refer to panel manufacturer's instructions). **CORRECT SETTING OF THE ADDRESS IS ESSENTIAL FOR THE SYSTEM TO CORRECTLY REPORT THE LOCATION OF AN ALARM.**

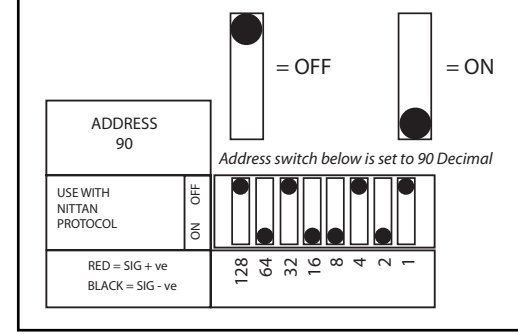
NS-MCP RESET WP Analogue Addressable Waterproof Manual Call Point

Part Numbers and Product Order Codes:-
Part Number: NS-ACP RESET WP
Description: Analogue Evolution Manual Call Point
Computer Reference No: F16N81364

Technical Specifications:-
Operation Method: Non Frangible, Resettable
Operating Element: Microswitch
Operating Voltage: 20V d.c. to 35V d.c.
System Voltage: 35V d.c.
Quiescent Current: 200µA
Alarm Current: 2mA (LED ON)

Operating Temperature: - 25°C to + 70°C
Storage Temperature: - 25°C to + 70°C
Charging Time: 1 minute
Relative Humidity: ≤ RH95% non-condensing
I.P. Protection Rating: IP67
Addressing Method: 8 Way DIL switch
Material: POM / Polycarbonate
Dimensions: 119mm x 119mm x 62mm
Mass: 324gms
Connections: Terminal Block

EMC Conformance: EMC conformance to BSEN50130-4
CE Conformity: EN54-11



Distributed by: **NITTAN**

Nittan (UK) Ltd
 Hiple Street · Old Woking · Surrey · GU22 9LQ · UK
 Tel: +44 (0)1483 769555 · Fax: +44 (0)1483 598506
 Email: sales@nittan.co.uk · Web: www.nittan.co.uk