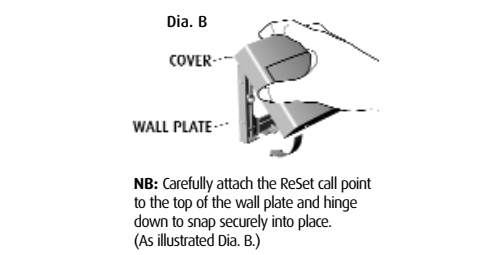
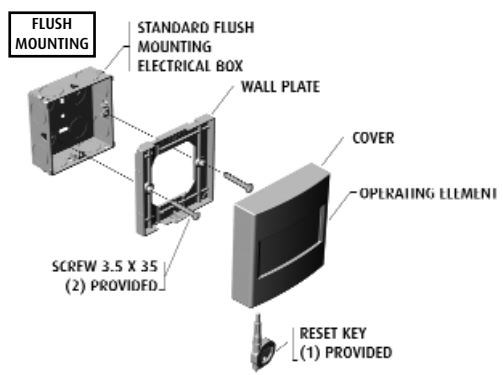
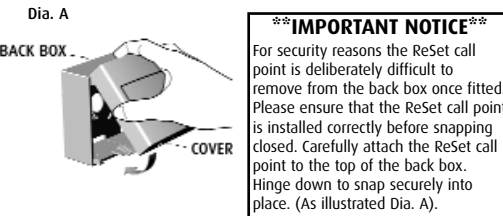
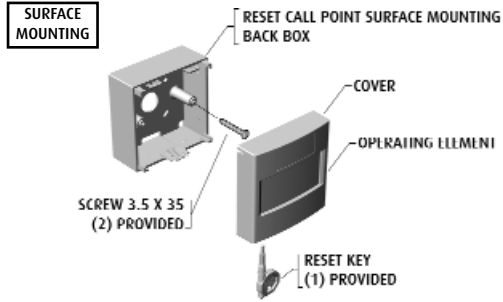


ReSet Call Point EV-MCP + NS-ACP ANALOGUE ADDRESSABLE

'ReSet' is a unique fire alarm manual call point that mimics the feel of breaking glass whilst offering the user the benefits and safety advantages of a glass-free resettable operating element. Once activated a warning flag drops in to view easily identifying the call point that has been operated. A key can then reset the unit. The 'ReSet' provides an ideal solution for most conventional fire alarm systems. It is ideal for industries that are sensitive to broken glass as well as areas that suffer from a high number of false activations such as schools, shopping centres and other public places.



Methods of Mounting

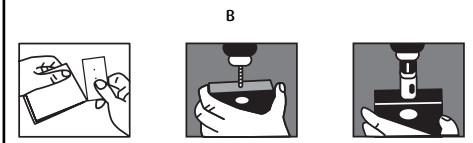
Flush installations
The ReSet call point is provided with a wall plate that is designed to fit directly onto a standard UK single 35mm deep flush box.

Secure the wall plate to the flush mount box with the screws provided. Carefully attach the ReSet call point to the top of the wall plate and hinge down to snap securely into place.

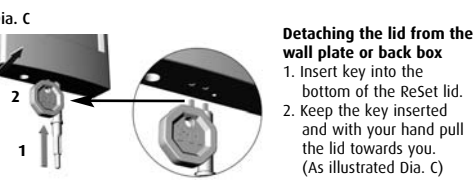
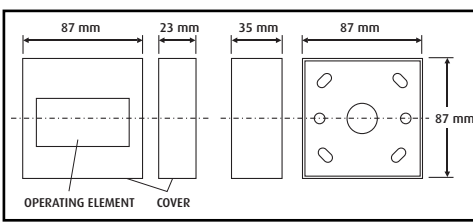
Surface Installations (RS1)
NB: For security reasons the ReSet call point is deliberately difficult to remove from the back box once fitted. Please ensure that the ReSet call point is installed correctly before snapping closed.

The ReSet call point can be supplied complete with its own surface mounting back box, 20mm entry holes can be easily cut using the template provided on each pack box. (See ill. 'B' below).

With the screws provided, fix the back box to the wall. Carefully attach the ReSet call point to the top of the back box, hinge down to snap securely into place.



Dimensions



****IMPORTANT NOTICE****
For security reasons the ReSet call point is deliberately difficult to remove from the back box once fitted. Please ensure that the ReSet call point is installed correctly before snapping closed. Carefully attach the ReSet call point to the top of the back box. Hinge down to snap securely into place. (As illustrated Dia. A).

Detaching the lid from the wall plate or back box
1. Insert key into the bottom of the ReSet lid.
2. Keep the key inserted and with your hand pull the lid towards you. (As illustrated Dia. C.)

Technical Data for ReSet Call Point EV-MCP + NS-ACP ANALOGUE ADDRESSABLE

EVOLUTION EV-MCP Analogue Addressable Manual Call Point

Part Numbers and Product Order Codes:-
Part Number: EV-MCP RESET
Description: Analogue Evolution Manual Call Point
Computer Reference No: F16N82003 - Surface Mount
F16N82008 - Flush Mount

Technical Specifications:-
Operation Method: Non Frangible, Resettable
Operating Element: Microswitch
Operating Voltage: 20V d.c. to 35V d.c.
System Voltage: 35V d.c.
Quiescent Current: 200µA
Alarm Current: 2mA (LED ON)

Operating Temperature: -10°C to +55°C
Storage Temperature: -20°C to +60°C
Charging Time: 1 minute
Relative Humidity: ≤ RH95% non-condensing
I.P. Protection Rating: IP24
Addressing Method: 8 Way DIL switch
Material: POM / Polycarbonate
Dimensions: 87mm x 87mm x 23mm
Mass: 115gms
Connections: Flying Leads

EMC Conformance: EMC conformance to BSEN50130-4
CE Conformity: EN54-11

NS-ACP RESET Analogue Addressable Manual Call Point

Part Numbers and Product Order Codes:-
Part Number: NS-ACP RESET
Description: Analogue Evolution Manual Call Point
Computer Reference No: F16N81365 - Surface Mount
F16N81366 - Flush Mount

Technical Specifications:-
Operation Method: Non Frangible, Resettable
Operating Element: Microswitch
Operating Voltage: 20V d.c. to 35V d.c.
System Voltage: 35V d.c.
Quiescent Current: 200µA
Alarm Current: 2mA (LED ON)

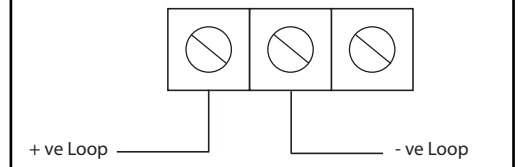
Operating Temperature: -10°C to +55°C
Storage Temperature: -20°C to +60°C
Charging Time: 1 minute
Relative Humidity: ≤ RH95% non-condensing
I.P. Protection Rating: IP24
Addressing Method: 8 Way DIL switch
Material: POM / Polycarbonate
Dimensions: 87mm x 87mm x 23mm
Mass: 115gms
Connections: Flying Leads

EMC Conformance: EMC conformance to BSEN50130-4
CE Conformity: EN54-11

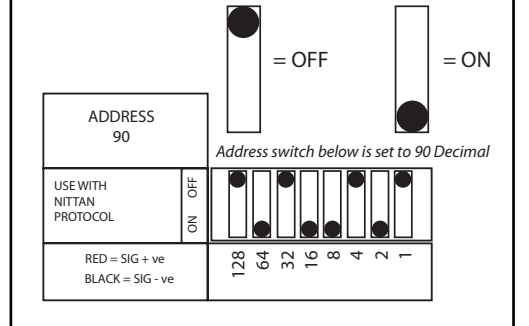
Call Point Connection + Address Setting

WARNING: Connect only to NITTAN (UK) Ltd suitable and compatible analogue-addressable control panels. If in doubt, check with panel manufacturer. The call point address **MUST** be set prior to installation with power off. This sheet gives summary information only.

CONNECTIONS



ADDRESS SETTING
Check whether your fire alarm panel codes the loop devices in DECIMAL or HEXA-DECIMAL (hex). After setting address, see overleaf, correct communication with the call point should be confirmed from the panel (refer to panel manufacturer's instructions). **CORRECT SETTING OF THE ADDRESS IS ESSENTIAL FOR THE SYSTEM TO CORRECTLY REPORT THE LOCATION OF AN ALARM.**



Distributed by: **NITTAN**

Nittan (UK) Ltd
Hiple Street · Old Woking · Surrey · GU22 9LQ · UK
Tel: +44 (0)1483 769555 · Fax: +44 (0)1483 598506
Email: sales@nittan.co.uk · Web: www.nittan.co.uk